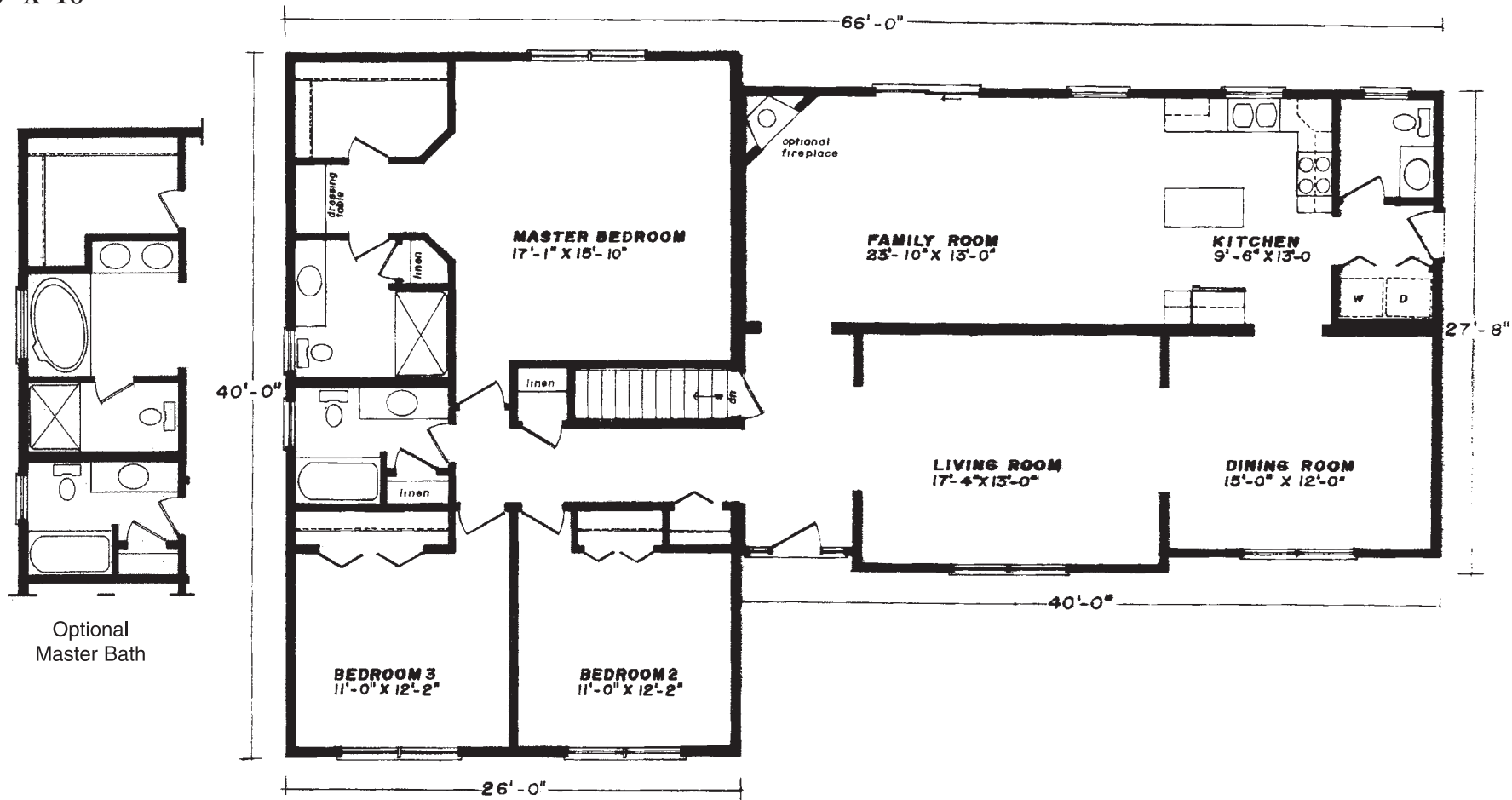


The Brentwood



27'8" x 40' • 2160 Sq. Ft.
26' x 40'

WESTCHESTER MODULAR HOMES



Standard Brentwood Features

- 3 Spacious Bedrooms
- 2 1/2 Baths
- Luxurious Master Suite Features; Dressing Table, 60" Vanity, 60" Shower, and Walk-in Closet
- Boxed-out Living Room with Reversed Gable
- Spacious Country Kitchen
- "Cottage-Style" 3056 Front Windows
- Fireplace Options Available
- Consult an Authorized Westchester Builder for a Complete List of Options
- Artist's renderings and Floor Plan Dimensions are approximate. All specifications must be Written in the Contract. No oral conditions.

Featuring High-Quality Andersen® Products



WESTCHESTER MODULAR HOMES, INC.
AN EMPLOYEE OWNED COMPANY
30 Reagans Mill Rd. • Wingdale, New York 12594
(800) 832-3888 • (845) 832-9400
www.westchestermodular.com