

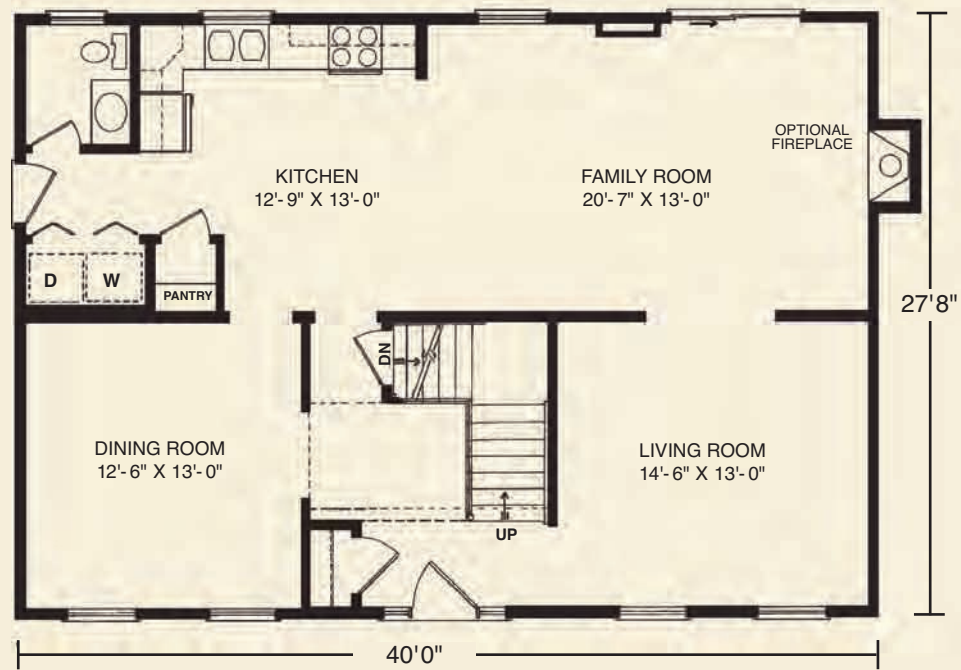
# The Cortland



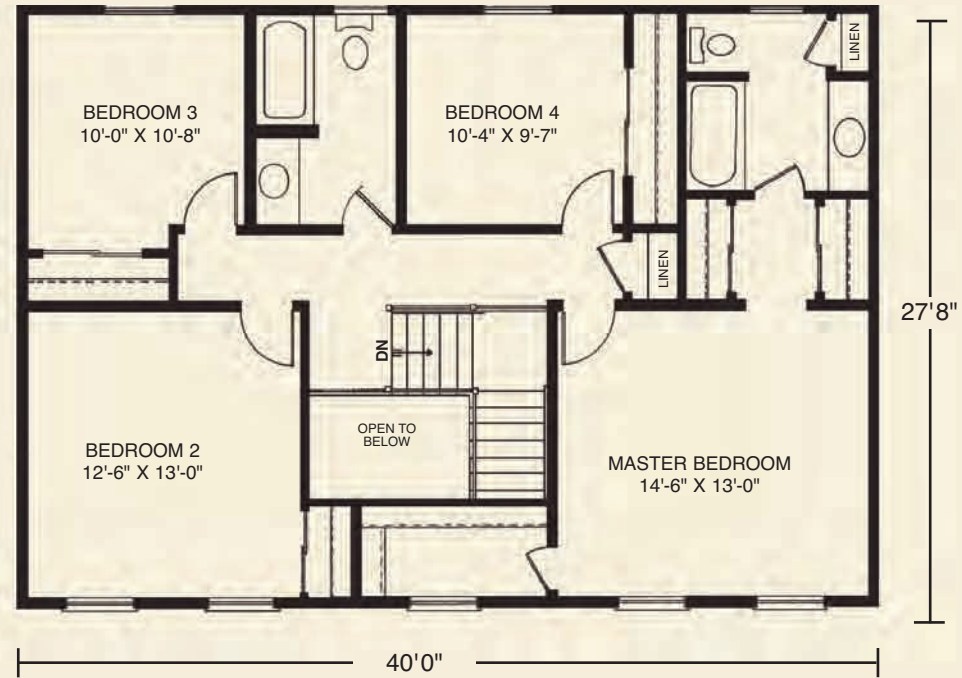
27'8" x 40' • 2240 Sq. Ft.

WESTCHESTER MODULAR HOMES

First Floor



Second Floor



## Standard Cortland Features

- 4 Spacious Bedrooms
- 2 1/2 Baths
- Open Two-Story Entry Foyer
- Formal Dining Room
- Formal Living Room
- Spacious Country Kitchen with Pantry
- “Acorn” Pediment on Front Door
- “Cottage-Style” 3056 Lower Level Windows with Architraves on Front
- Fireplace Options Available
- “Boxed-Out” and “Angle-Bay” Options Available
- Consult an Authorized Westchester Builder for a Complete List of Options
- Photos and Floor Plan Dimensions are approximate. All specifications must be Written in the Contract. No oral conditions.



We Build Green!

Featuring High-Quality Andersen® Products  
 WINDOWS • DOORS



**WESTCHESTER MODULAR HOMES, INC.**  
 AN EMPLOYEE OWNED COMPANY  
 30 Reagans Mill Rd. • Wingdale, New York 12594  
 (800) 832-3888 • (845) 832-9400  
 www.westchestermodular.com