



Standards

- Includes all standard WMH construction specifications.
- 7/12 roof pitch
- Laundry room with washer/dryer hookups and raised panel oak cabinets with laminate countertop and stainless steel laundry sink.
- Oak rails to basement (stairs to basement by builder)
- Master Bathroom includes:
 - Double bowl vanity
 - Private commode area
 - 48" X 48" shower prep with pan
 - Dressing area with cabinets, mirror and lighting
 - Large walk-in closet
- Mud room includes drop off area with raised panel oak base and wall cabinetry for storage
- Kitchen Features
 - Merillat raised panel oak or recess panel maple cabinets
 - Open soffit
 - Center island
 - Oversized pantry closet
 - Casement window over kitchen sink
- Exterior Features:
 - Front entry door with double sidelights
 - 15 lite rear door off dining room
 - B-label door from mud room to garage
 - Transom windows in bathrooms and master bedroom



WESTCHESTER MODULAR HOMES, INC.

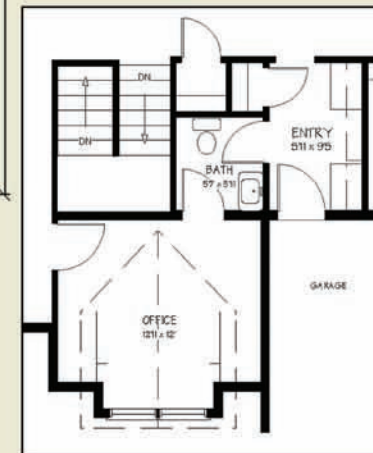
AN EMPLOYEE OWNED COMPANY

30 Reagans Mill Road • Wingdale, NY 12594

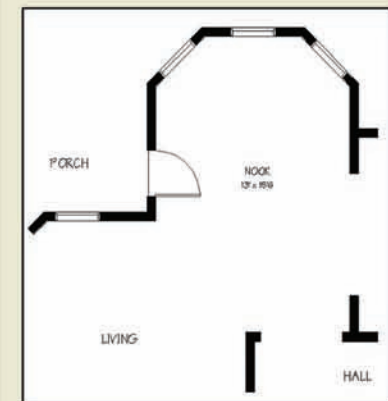
800-832-3888

www.westchestermodular.com

Elevation and interior views shown on front cover includes optional features. Please consult your authorized independent builder for more details. Floor plans and elevations are artist's renderings only. Room dimensions and square footage are approximates.



Optional Office



Optional Breakfast Nook