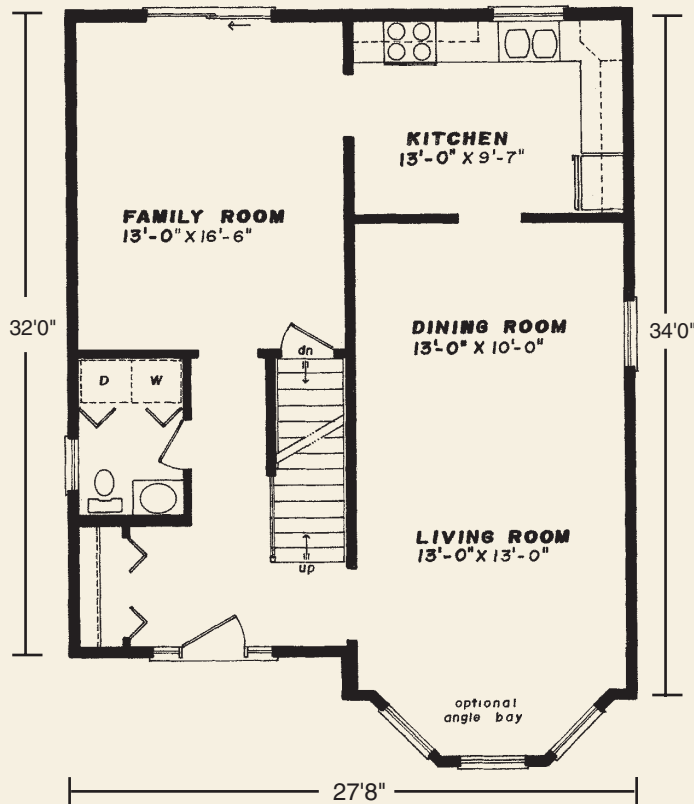




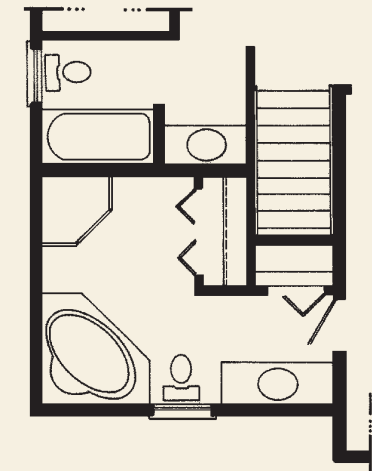
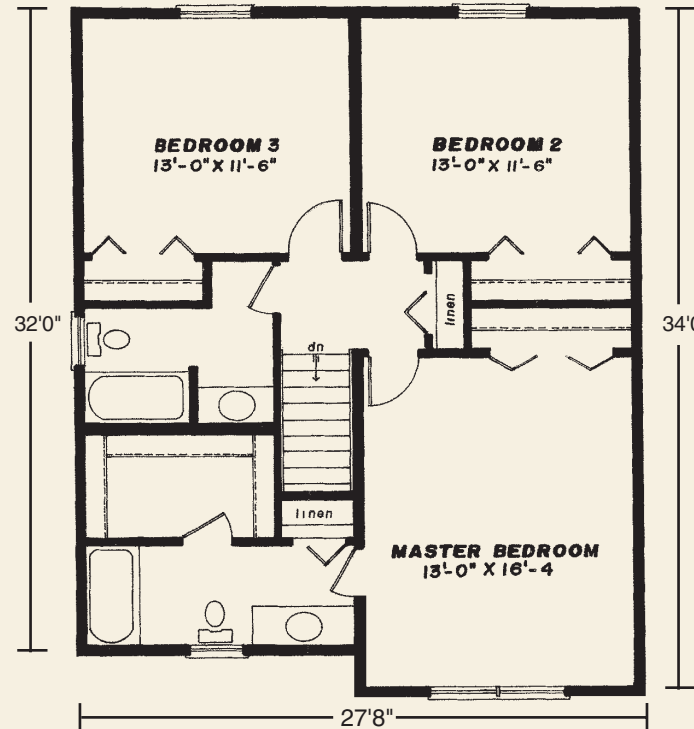
27'8" x 32'3/4" • 1848 Sq. Ft.

WESTCHESTER MODULAR HOMES

First Floor



Second Floor



Optional Master Bath

Standard Richmond Features

- 3 Spacious Bedrooms
- 2 1/2 Baths
- Master Suite Features Private Bath with Walk-In Closet
- Formal Dining Room
- Formal Living Room
- Eat-In Country Kitchen
- "Cottage Style" 3056 Lower Level Front Windows
- Fireplace Options Available
- "Boxed-Out" and "Angle-Bay" Options Available
- Consult an Authorized Westchester Builder for a Complete List of Options
- Photos and Floor Plan Dimensions are approximate. All specifications must be Written in the Contract. No oral conditions.



We Build Green!

Featuring High-Quality Andersen® Products



WESTCHESTER MODULAR HOMES, INC.
 AN EMPLOYEE OWNED COMPANY
 30 Reagans Mill Rd. • Wingdale, New York 12594
 (800) 832-3888 • (845) 832-9400
 www.westchestermodular.com