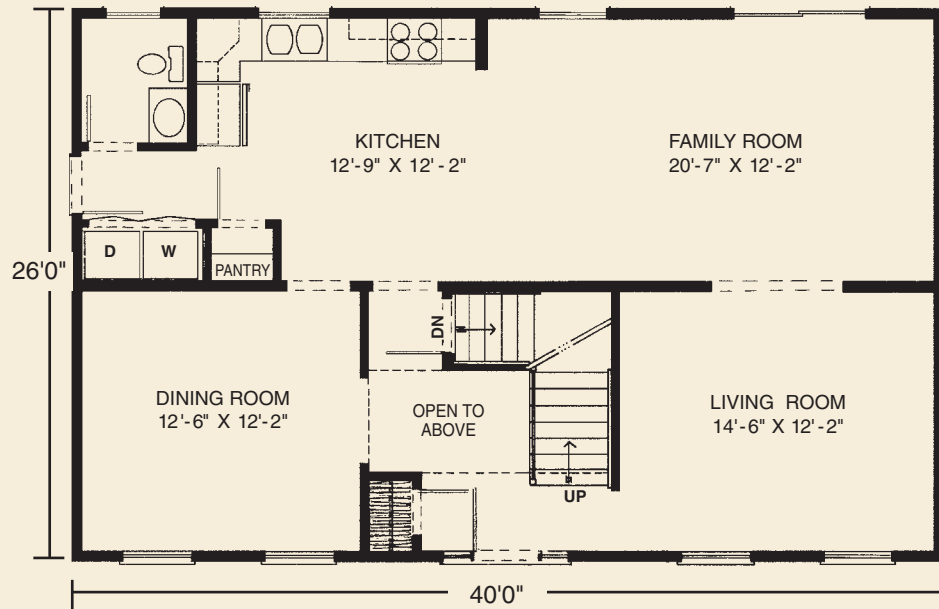


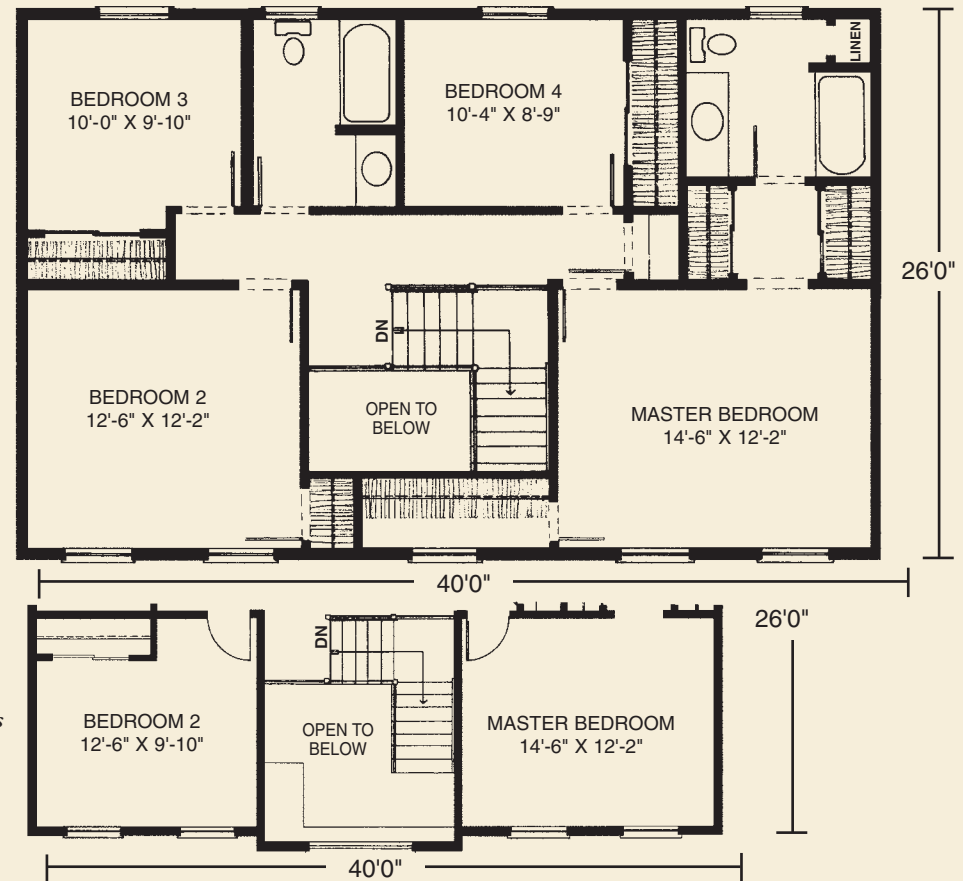
26' x 40' • 2080 Sq. Ft.

WESTCHESTER MODULAR HOMES

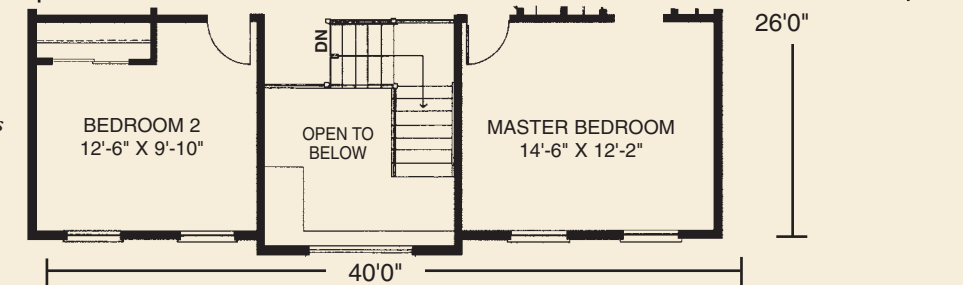
First Floor



Second Floor



Floor plan to the right accommodates optional elevation.



Standard Windsor Features

- 4 Spacious Bedrooms
- 2 1/2 Baths
- Open Two-Story Entry Foyer
- Formal Dining Room
- Formal Living Room
- Spacious Country Kitchen with Pantry
- 3056 "Cottage Style" Lower Level Windows with Architraves
- Framingham Pediment on Front Door
- Fireplace Options Available
- "Boxed-Out" and "Angle-Bay" "Options Available"
- Consult an Authorized Westchester Builder for a Complete List of Options
- Artist's renderings and Floor Plan Dimensions are approximate. All specifications must be Written in the Contract. No oral conditions.



We Build Green!

Featuring High-Quality Andersen® Products



WESTCHESTER MODULAR HOMES, INC.

AN EMPLOYEE OWNED COMPANY

30 Reagans Mill Rd. • Wingdale, New York 12594

(800) 832-3888 • (845) 832-9400

www.westchestermodular.com