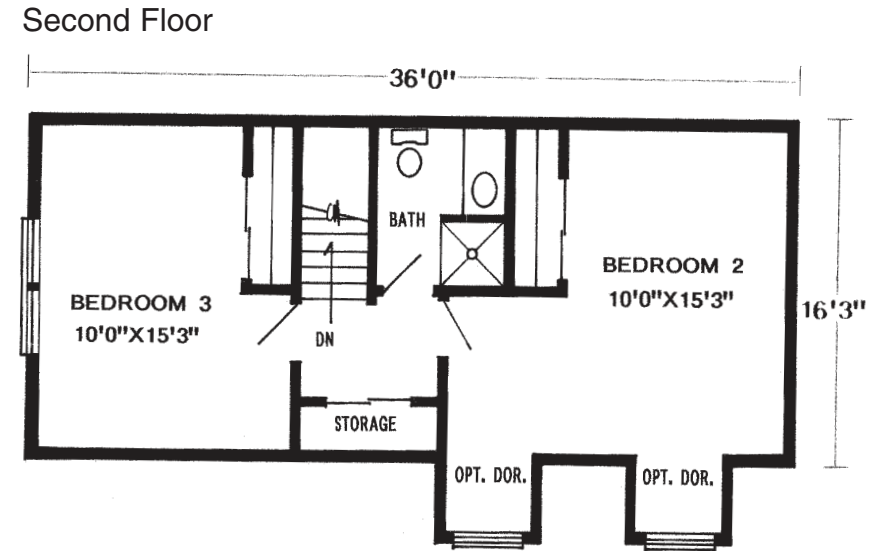
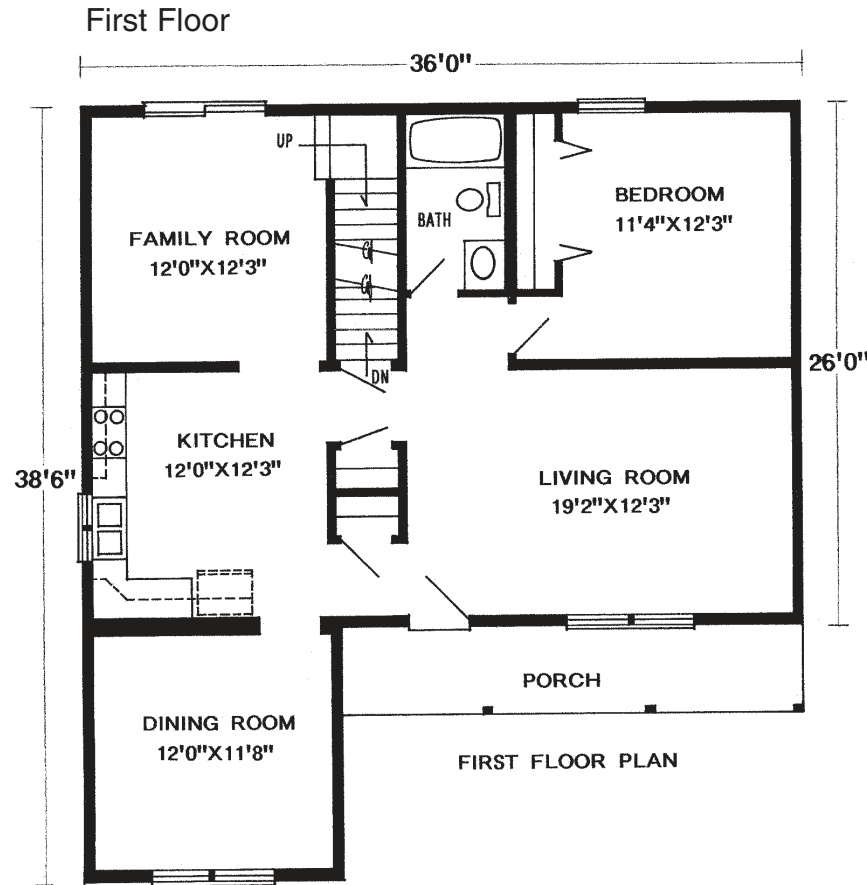


38'6" x 36' • 1080 Sq. Ft.

Unfinished Second Floor - 15'4" x 36' • 551 Sq. Ft.



Standard Baldwin Features

- Formal Dining Room
- Family Room
- Unfinished Second Floor for Future Expansion
- 4 - 3046 Second Floor Windows Included
- Fireplace Options Available
- Consult an Authorized Westchester Builder for a Complete List of Options
- Artist's renderings and Floor Plan Dimensions are approximate. All specifications must be Written in the Contract. No oral conditions.



We Build Green!

Featuring High-Quality Andersen® Products



WESTCHESTER MODULAR HOMES, INC.

AN EMPLOYEE OWNED COMPANY

30 Reagans Mill Rd. • Wingdale, New York 12594

(800) 832-3888 • (845) 832-9400

www.westchestermodular.com