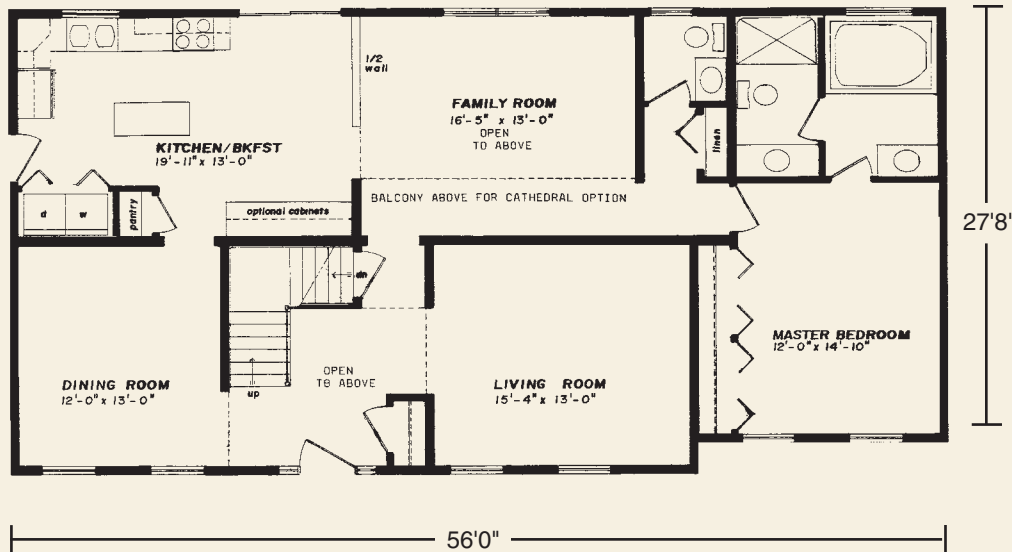
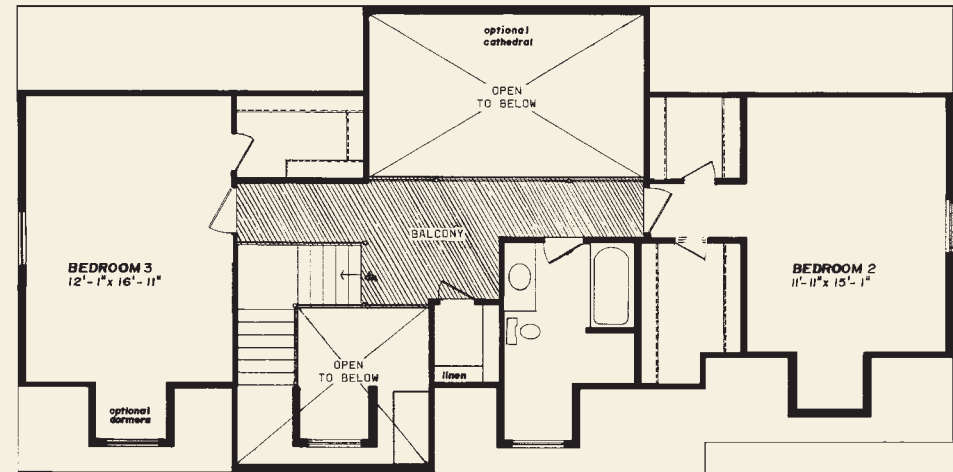


27'8" x 56' • 1568 Sq. Ft.
 Unfinished Second Floor - 16' x 56' • 896 Sq. Ft.

First Floor



Second Floor (suggested layout)



Standard Chatham Features

- Luxurious First Floor Master Suite Private Bath Includes: Jacuzzi Tub, Shower and Double Vanities.
- First Floor Half Bath
- Open Two-Story Entry Foyer with Cathedral
- Formal Dining Room
- Formal Living Room
- Spacious Island Kitchen, Pantry and Utility Closet
- Unfinished Second Floor for Future Expansion to Include 4-3046 Windows; Cage Rail for Open Entry in Lieu of Wall Panels and Door for Top of Stairs.
- "Cottage-Style" 3056 Lower Level Windows on Front
- Fireplace Options Available
- "Boxed-out" and "Angle-Bay" Options Available
- Consult an Authorized Westchester Builder for a Complete List of Options
- Photos and Floor Plan Dimensions are approximate. All specifications must be Written in the Contract. No oral conditions.



We Build Green!

Featuring High-Quality Andersen® Products



WESTCHESTER MODULAR HOMES, INC.
 AN EMPLOYEE OWNED COMPANY
 30 Reagans Mill Rd. • Wingdale, New York 12594
 (800) 832-3888 • (845) 832-9400
 www.westchestermodular.com